

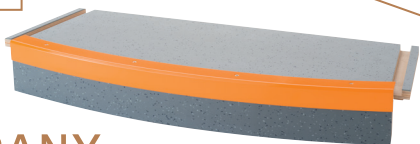
OUR SYSTEM SOLUTIONS



Air Ducts



Ceiling Elements



Flooring Panels



Wall Cladding



Tables



PRODUCTION

Can be combined with each other as

- Air-conditioning including control units
- Floor elements with electric components
- CAD/CNC
- Bonding processes acc. DIN 6701-2 class A1
- Surface claddings and paint works
- PU-edges

Our products:

BARY VAM®
Sound Brake

JELMO®
Fire Protection

POLYVAN®
Light, natural, sound absorbing

WARO® foam Classic
Lightweight, fire retardant

THE COMPANY

Expertise since 1969 - Numerous successfully implemented projects show our decades of experience as internationally operating system supplier in the railway industry and shipbuilding business.

Thanks to many years of partnership with our customers, we continue to take on new challenges with our Germany-wide production sites.

CERTIFICATES

EN ISO 9001

Adhesive Certification DIN 6701-2

Q1 Supplier of Deutsche Bahn  Mobility Networks Logistics

CL 2 Welding Approval DIN EN 15085-2

Official Railway Industry Approvals

Official Shipbuilding Approvals

Fire Tests



REFERENCES



SITES



Rudolf Rost Sperrholz GmbH
Lohe 4
25462 Rellingen
Germany

Phone 0049 (0)4101/59 39 - 0
Fax 0049 (0)4101/59 39 - 59
E-mail info@rudolf-rost.de
www.rudolf-rost.de

Headquarter Rellingen bei Hamburg
Production Hamburg, Aachen,
Baden Baden
Sales Office France

08/22 © Fotos: Deff, www.siemens.com/presse, IStockphoto, Thomas König, Ralf Krause



MATERIALS AND SYSTEMS FOR INTERIORS

Your competent partner for ship and rail solutions.

ALSTOM · SIEMENS · STADLER · DEUTSCHE BAHN
SBB · ÖBB · SNCF · BLOHM + VOSS · MEYER WERFT